

## THREE PIECE BALL VALVE (FLANGED END)

**SIZES: DN15 TO DN250**

**CLASS 150 | CLASS 300**



### FEATURES

- Floating Type Ball Valve i.e. the ball is suspended in the media but held in place by the two seat rings and supported by the valve seats.
- The floating design allows the ball to move slightly within the valve body which helps to reduce the operating torque and extend the valve service life.
- Soft seated design provides a tight seal between the ball and the seat while also allowing for some flexibility.
- Soft seated design reduces the operating torque required for opening and closing the valve.
- Soft seated design minimizes the risk of damage to the ball and the seat.
- Blowout proof stem in ball valves is designed to prevent the stem from being blown-out of the body due to high pressure or excessive force.
- The pressure-relief hole in the valve helps to equalize the pressure across the valve, reducing the risk of damage to the valve or the pipeline. This helps to ensure reliable operation and prevents leaks or malfunctions.
- The anti-static device in ball valves helps to prevent static electricity buildup during operation, which can reduce the risk of fire or explosion in certain applications.
- Mirror finish ball helps to reduce friction, ensuring smooth operation and extending the valve's life span.
- The mirror finish also provides excellent corrosion resistance ensuring that the valve performs reliably even in harsh environments.
- Fire-safe valves are designed to prevent flammable fluids from spreading in the event of a process line fire. The design uses metal back-up seats to prevent ignition.
- Three-piece design i.e. the body and the 2 end pieces are bolted and assembled together.
- Three-piece design helps in removal of the valve body and trims independently and quickly without interfering with the pipe connections.
- Three-piece design ensures low long-term maintenance cost.
- End Connection is Flanged type as per the standard ASME B16.5.
- The integral ISO 5211 mounting pad provides a standard interface for mounting actuators or gear operators, making it easy to automate the valve.

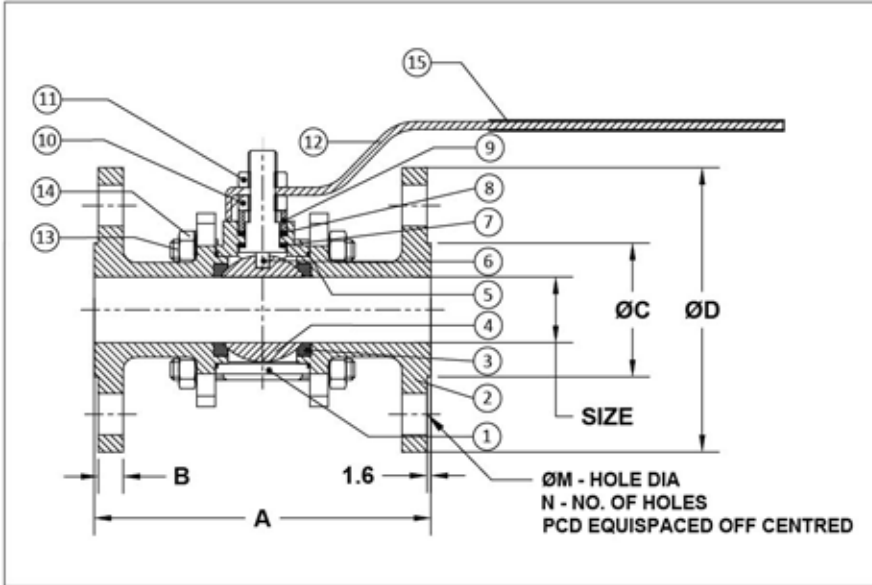
ISO 9001:2015

**BUREAU VERITAS**  
Certification



## TECHNICAL DATA:

DESIGN & MANUFACTURING STANDARD	: API 6D / BS EN ISO 17292 / ASME B16.34
TESTING & INSPECTION STANDARD	: API 598 / API 6D / ISO 5208
FACE TO FACE	: API 6D / ASME B16.10
FLANGED END	: ASME B16.5
FIRE TEST	: ISO 10497 / API 607 / API 6FA
MOUNTING PAD	: ISO 5211
NACE	: ANSI/ASME MR 0175 / ISO 15156-1



NO	DESCRIPTION	MATERIAL	QTY
1	BODY	CI / CS / SS304 / SS316	1
2	END PIECE	CI / CS / SS304 / SS316	2
3	SEAT RING	PTFE	2
4	BALL	AISI 304 / AISI 316	1
5	BODY SEAL	PTFE	2
6	STEM	AISI 304 / AISI 316	1
7	STEM SEAL	PTFE	1
8	GLAND PACKING	PTFE	1
9	GLAND	AISI 304 / AISI 316	1
10	GLAND NUT	AISI 304 / AISI 316	1
11	LEVER NUT	AISI 304 / AISI 316	1
12	LEVER	CS / SS304 / SS316	1
13	STUD	CS / SS	---
14	STUD NUT	CS / SS	---
15	LEVER SLEEVE	PVC	1

SIZE		CLASS 150						
in.	mm	A	B	ØC	ØD	ØM	N	PCD
½"	15	108	10	35	89	16	4	60.4
¾"	20	118	10.5	43	98	16	4	69.8
1"	25	127	11	51	108	16	4	79.2
1 ¼"	32	140	12.7	64	117	16	4	88.9
1 ½"	40	165	14.2	73	127	16	4	98.5
2"	50	178	15.7	92	152	19	4	120.6
2 ½"	65	191	17.5	105	178	19	4	139.7
3"	80	203	19	127	190.5	19	4	152.4
4"	100	229	24	157	229	19	8	190.5
5"	125	254	24	186	254	22	8	215.9
6"	150	267	25	216	279	22	8	241.3
8"	200	292	28.5	270	343	22	8	298.4
10"	250	330	30	324	406	25	12	362

SIZE		CLASS 300						
in.	mm	A	B	ØC	ØD	ØM	N	PCD
½"	15	140	14.2	35	95	16	4	66.5
¾"	20	152	15.7	43	117	19	4	82.5
1"	25	165	17.5	51	124	19	4	88.9
1 ¼"	32	178	19	64	133	19	4	98.5
1 ½"	40	190.5	20.5	73	155.5	22	4	114.3
2"	50	216	22	92	165	19	8	127
2 ½"	65	241	25	105	190.5	22	8	149.3
3"	80	282.5	28.5	127	209.5	22	8	168
4"	100	305	32	157	254	22	8	200
5"	125	381	35	186	279.4	22	8	235
6"	150	403	36.5	216	317.5	22	12	269.7
8"	200	419	41	270	381	25	12	330.2
10"	250	457	47.5	324	444.5	28	16	387.4

ALL DIMENSIONS ARE IN MM UNLESS OTHERWISE SPECIFIED

PRIMARY SERVICE RATING & TEST PRESSURE				
CLASS	WORKING PRESSURE	HYD. TEST PRESSURE		
		BODY	SEAT	TEMP.
150	150 PSIG	425 PSIG	300 PSIG	200°F
300	300 PSIG	1100 PSIG	800 PSIG	200°F
AIR TEST - SEAT : 80 PSIG ± 10 PSIG				

**REGISTERED FACTORY AND OFFICE**  
**ROYALTECH VALVES**  
 #B-492/B, 2ND GATE INDUSTRIAL ESTATE  
 GOKUL ROAD, HUBLI-580030  
 KARNATAKA, INDIA

**FOR ENQUIRY, CONTACT US AT**

☎ +91 90198 20791 | 97383 48007

✉ sales.royaltechvalves@gmail.com

**FOR FURTHER DETAILS, VISIT OUR WEBSITE**

🌐 www.royaltechvalves.com