

SWING CHECK VALVE (FLANGED END)

SIZES: DN40 TO DN400

CLASS 150 | CLASS 300



FEATURES

- A quality cast steel swing check valve with bolted body-cover construction.
- Swing check valves is installed to allow flow in one direction only and protect systems that can be affected by reverse flow.
- Operated entirely by reaction to the direction of flow, swing check valves do not require any external actuation.
- Integral seated valve that offers a low pressure drop.
- Body and Cover: Precision machined castings.
- Body and cover joint: Accurately machined, fully-enclosed gasket.
- Disc: Robust one-piece construction to withstand the severe shock of check valve service. Hard faced with 13% Cr and lapped to a mirror finish.
- Disc assembly: Non-rotating disc is fastened securely to hinge with a lock nut and disc washer. Hinge is supported on a sturdy disc carrier hinge pin of excellent bearing qualities.
- Flanges: Raised Face ASME Class150 & Class 300.
- All parts are accessible from top for easy servicing.
- Once the cover is removed, all parts are easily accessible for maintenance and seating faces can be re-lapped.

ISO 9001:2015

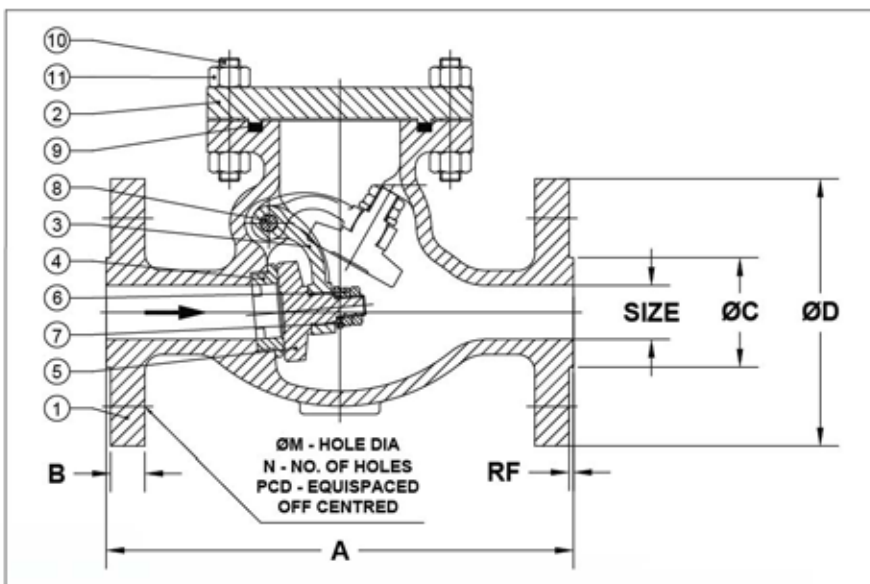
BUREAU VERITAS
Certification



TECHNICAL DATA:

MANUFACTURING STANDARD : API 6D / BS 1868
 TESTING & INSPECTION STANDARD : API 598 / API 6D
 FACE TO FACE : ASME B16.10
 SHELL WALL THICKNESS : ASME B16.34
 END CONNECTIONS : FLANGED AS PER ASME B16.5

NO	DESCRIPTION	MATERIAL	QTY
1	BODY	ASTM A216 Gr.WCB / CI	1
2	COVER	ASTM A216 Gr.WCB / CI	1
3	HINGE	ASTM A216 Gr.WCB	1
4	SEAT RING	CARBON STEEL WITH 13% Cr	1
5	DISC	ASTM A216 Gr.WCB WITH 13% Cr	1
6	DISC NUT	ASTM A193 Gr.B7 / ASTM A194 Gr.2H	2
7	DISC WASHER	AISI SS410	1
8	HINGE PIN	AISI SS410	1
9	COVER GASKET	COMPRESSED ASBESTOS FIBRE	1
10	COVER STUDS	ASTM A193 Gr.B7 / ASTM A194 Gr.2H	----
11	COVER NUTS	ASTM A193 Gr.B7 / ASTM A194 Gr.2H	----



HYDROSTATIC TEST PRESSURE		SERVICE RATING		
CLASS	BODY	SEAT	PRESSURE	TEMP.
150	425 PSIG	300 PSIG	150 PSIG	500°F
300	1100 PSIG	800 PSIG	300 PSIG	800°F
AIR TEST - SEAT : 80 PSIG ± 10 PSIG				

SIZE		CLASS 150						
in.	mm	A	B	ØC	ØD	ØM	N	PCD
1 ½"	40	165	14.2	73	127	16	4	98.5
2"	50	203	15.7	92	152	19	4	120.6
2 ½"	65	216	17.5	105	178	19	4	139.7
3"	80	241	19	127	190.5	19	4	152.4
4"	100	292	24	157	229	19	8	190.5
5"	125	330	24	186	254	22	8	215.9
6"	150	356	24	216	279	22	8	241.3
8"	200	495	28.5	270	343	22	8	298.4
10"	250	622	30	324	406	25	12	362
12"	300	699	32	381	483	25	12	431.8
14"	350	787	35	413	533	28	12	476.2
16"	400	864	36.5	470	597	28	16	539.8

SIZE		CLASS 300						
in.	mm	A	B	ØC	ØD	ØM	N	PCD
1 ½"	40	241.3	20.5	73	156	22	4	114.3
2"	50	266.7	22	92	165	19	8	127
2 ½"	65	292	25	105	190.5	22	8	149.3
3"	80	317.5	28.5	127	209.5	22	8	168
4"	100	355.6	32	157	254	22	8	200
5"	125	400	35	186	279.4	22	8	235
6"	150	444.5	36.5	216	317.5	22	12	269.7
8"	200	533.4	41	270	381	25	12	330.2
10"	250	622.3	47.5	324	444.5	28	16	387.4
12"	300	711.2	51	381	521	32	16	450.8
14"	350	838	54	413	584	32	20	514.3
16"	400	863.6	57	470	648	35	20	571.5

ALL DIMENSIONS ARE IN MM UNLESS OTHERWISE SPECIFIED

REGISTERED FACTORY AND OFFICE
ROYALTECH VALVES
 #B-492/B, 2ND GATE INDUSTRIAL ESTATE
 GOKUL ROAD, HUBLI-580030
 KARNATAKA, INDIA

FOR ENQUIRY, CONTACT US AT

☎ +91 90198 20791 | 97383 48007

✉ sales.royaltechvalves@gmail.com

FOR FURTHER DETAILS, VISIT OUR WEBSITE

🌐 www.royaltechvalves.com