

GATE VALVE (FLANGED END)

SIZES: DN40 TO DN400

CLASS 150 | CLASS 300



FEATURES

- Gate valve has compact and rigid structure.
- Sturdy design for high-pressure & temperature service.
- The body and the bonnet are manufactured by casting method.
- Bolted body-bonnet, outside screw & Yoke type, Rising Stem construction.
- Flexible wedge, Metal to Metal seating.
- The wedge-shaped gate that drops into the bottom section to close and lifts perpendicularly into the upper section to open.
- Stainless Steel Stem to avoid corrosion.
- The sealing surface is made of stainless steel and hard alloy, so the sealing is good.
- Flexible graphite asbestos packing is used for reliable sealing.
- Provided full flow with minimal pressure drop.
- Small opening and closing torque.
- The outside screw & Yoke configuration protects the stem.
- Robust construction of hand wheel in open spoke design.
- Easy visual control of open/closed position marked on the hand wheel.
- End Connection is Flanged type as per the standard ASME B16.5.
- The flanged end allows for easy installation into new piping runs or removal for maintenance and replacement.

ISO 9001:2015

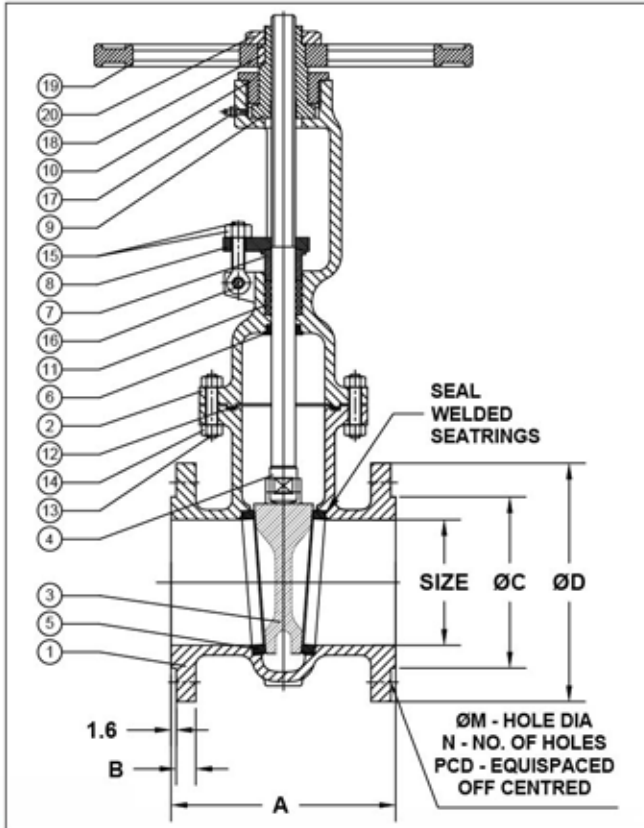
BUREAU VERITAS
Certification



TECHNICAL DATA :

MANUFACTURING STANDARD : API 600
 TESTING & INSPECTION STANDARD : API 598
 FACE TO FACE : AS PER ASME B16.10
 SHELL WALL THICKNESS : ASME B16.34
 END CONNECTIONS : FLANGED AS PER ASME B16.5

PRIMARY SERVICE RATING & TEST PRESSURE				
CLASS	WORKING PRESSURE	TEMP.	HYD. TEST PRESSURE	
			BODY	SEAT
150	150 PSIG	500°F	425 PSIG	300 PSIG
300	300 PSIG	800°F	1100 PSIG	800 PSIG
AIR TEST - SEAT : 80 PSIG ± 10 PSIG				



NO	DESCRIPTION	MATERIAL	QTY
1	BODY	ASTM A216 Gr.WCB / CI	1
2	BONNET	ASTM A216 Gr. WCB / CI	1
3	WEDGE	AISI304 / AISI 316 / AISI 13% Cr. SS	1
4	STEM	AISI304 / AISI 316 / AISI 13% Cr. SS	1
5	SEAT RINGS	AISI304 / AISI 316 / AISI 13% Cr. SS	2
6	BACKSEAT BUSHING	AISI 410	1
7	GLAND	CARBON STEEL	1
8	GLAND FLANGE	ASTM A216 Gr. WCB	1
9	YOKE SLEEVE	AL. BRONZE / NI-RESIST	1
10	LOCK NUT	AISI 410	1
11	STEM PACKINGS	METALLIC WIRE REINFORCED GRAPHITED ASBESTOS	----
12	BONNET GASKET	SPIRAL WOUND METALLIC GASKET	1
13	BONNET STUDS	ASTM A193 Gr.B7	----
14	BONNET NUTS	ASTM A194 Gr.2H	----
15	GLAND EYEBOLTS & NUTS	ASTM A193 Gr.B7 / ASTM A194 Gr.2H	2
16	GLAND LUG BOLTS & NUTS	ASTM A193 Gr.B7 / ASTM A194 Gr.2H	2
17	GREASE NIPPLE	STANDARD	1
18	KEY	CARBON STEEL	1
19	HANDWHEEL	CI / CS	1
20	HANDWHEEL NUT	CARBON STEEL	1

SIZE		CLASS 150							
in.	mm	A	B	ØC	ØD	ØM	N	PCD	ØJ
1"	25	127	11	51	108	16	4	79.2	123
1½"	40	165.1	14.2	73	127	16	4	98.5	152
2"	50	177.8	15.7	92	152	19	4	120.6	203
2½"	65	190.5	17.5	105	178	19	4	139.7	203
3"	80	203.2	19	127	190.5	19	4	152.4	254
4"	100	228.6	24	157	229	19	8	190.5	305
5"	125	254	24	186	254	22	8	215.9	305
6"	150	266.7	25	216	279	22	8	241.3	356
8"	200	292.1	28.5	270	343	25	8	298.4	356
10"	250	330.2	30	324	406	25	12	362	406
12"	300	355.6	32	381	483	25	12	431.8	457
14"	350	381	35	413	534	28	12	476.2	508
16"	400	406.4	36.5	470	597	28	16	539.7	508

SIZE		CLASS 300							
in.	mm	A	B	ØC	ØD	ØM	N	PCD	ØJ
1½"	40	190.5	20.5	73	155.4	22	4	114.3	152
2"	50	215.9	22	92	165	19	8	127	203
2½"	65	241.3	25	105	190.5	22	8	149.3	203
3"	80	282.5	28.5	127	209.5	22	8	168.1	254
4"	100	304.8	32	157	254	22	8	200.1	305
5"	125	381	35	186	279.4	22	8	234.9	356
6"	150	403.2	36.5	216	317.5	22	12	269.7	356
8"	200	419.1	41	270	381	25	12	330.2	406
10"	250	457.2	48	324	444.5	29	16	387.3	457
12"	300	501.6	51	381	520.7	32	16	450.8	508
14"	350	762	54	413	584.2	32	20	514.3	508
16"	400	838.2	57	470	647.7	35	20	571.5	508

ALL DIMENSIONS ARE IN MM UNLESS OTHERWISE SPECIFIED

REGISTERED FACTORY AND OFFICE
ROYALTECH VALVES
 #B-492/B, 2ND GATE INDUSTRIAL ESTATE
 GOKUL ROAD, HUBLI-580030
 KARNATAKA, INDIA

FOR ENQUIRY, CONTACT US AT

+91 90198 20791 | 97383 48007

sales.royaltechvalves@gmail.com

FOR FURTHER DETAILS, VISIT OUR WEBSITE

www.royaltechvalves.com