

GLOBE VALVE (FLANGED END)

SIZES: DN25 TO DN300

CLASS 150 | CLASS 300



FEATURES

- Globe Valves are designed to stop, start and regulate flow.
- Compact & rigid structure.
- Straight pattern (T-Pattern), O/S & Yoke Type, Rising Stem Construction.
- The disc of a Globe valve can be totally removed from the flow path or it can completely close the flow path.
- The horizontal setting of the seat allows the stem and disk to travel perpendicular to the horizontal line; this assures accurate regulated flow control.
- Metal to Metal seating.
- Stainless Steel Body & Disc rings, Stainless Steel Stem to avoid corrosion.
- Flexible graphite asbestos packing is used for reliable sealing.
- By design, the bonnet area contains the stem, plug, and guiding surfaces is fully isolated from the flow path.
- This protects components from erosion and process media exposure. It also allows inline maintenance by removing just the bonnet – no need to disconnect the valve body itself.
- Small opening and closing torque.
- The outside screw & Yoke configuration protects the stem.
- Robust construction of hand wheel in open spoke design.
- Easy visual control of open/closed position marked on the hand wheel.

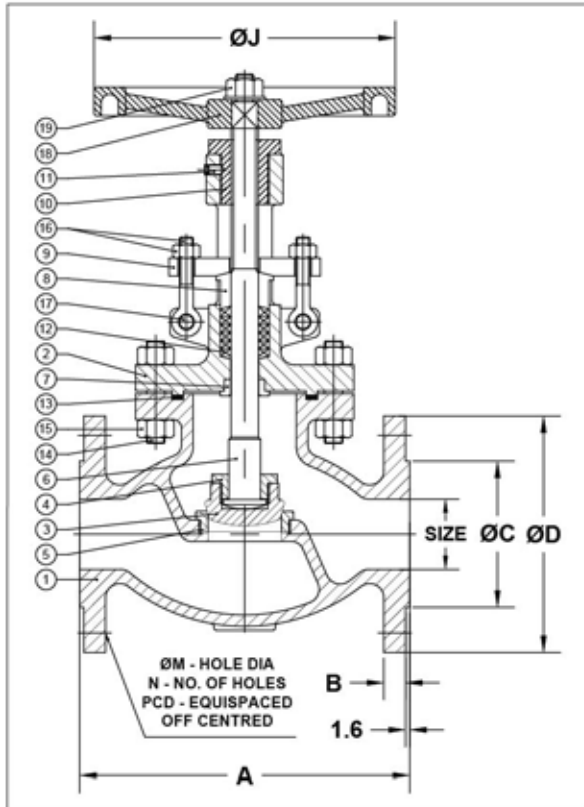
ISO 9001:2015

BUREAU VERITAS
Certification



TECHNICAL DATA :

MANUFACTURING STANDARD : BS 1873
 TESTING & INSPECTION STANDARD : API 598
 FACE TO FACE : ASME B16.10
 END CONNECTIONS : FLANGED AS PER ASME B16.5
 SHELL WALL THICKNESS : ASME B16.34



PRIMARY SERVICE RATING & TEST PRESSURE				
CLASS	WORKING PRESSURE	TEMP.	HYD. TEST PRESSURE	
			BODY	SEAT
150	150 PSIG	500°F	425 PSIG	300 PSIG
300	300 PSIG	800°F	1100 PSIG	800 PSIG
AIR TEST - SEAT : 80 PSIG ± 10 PSIG				

SIZE		CLASS 150							
in.	mm	A	B	ØC	ØD	ØM	N	PCD	ØJ
1"	25	127	11	51	108	16	4	79.2	100
1½"	40	165	14.2	73	127	16	4	98.5	135
2"	50	203	15.7	92	152	19	4	120.6	200
2½"	65	216	17.5	105	178	19	4	139.7	250
3"	80	241	19	127	190.5	19	4	152.4	250
4"	100	292	24	157	229	19	8	190.5	300
5"	125	356	24	186	254	22	8	215.9	350
6"	150	406	25	216	279	22	8	241.3	350
8"	200	495	28.5	270	343	22	8	298.4	400
10"	250	622	30	324	406	25	12	362	450
12"	300	698	32	381	483	25	12	431.8	500

SL NO	DESCRIPTION	MATERIAL	QTY
1	BODY	ASTM A216 Gr.WCB / CI	1
2	BONNET	ASTM A216 Gr.WCB / CI	1
3	DISC	AISI 304 / AISI 316 / 13% Cr. SS	1
4	DISC NUT	AISI 304 / AISI 316 / 13% Cr. SS	1
5	SEAT RING	AISI 304 / AISI 316 / 13% Cr. SS	1
6	STEM	AISI 304 / AISI 316 / 13% Cr. SS	1
7	BACKSEAT BUSHING	AISI 410 / 304 / 316	1
8	GLAND	AISI 410 / 304 / 316	1
9	GLAND FLANGE	CARBON STEEL	1
10	YOKE BUSH	AL. BRONZE / NI-RESIST	1
11	GRUB SCREW	CARBON STEEL	1
12	STEM PACKINGS	METALLIC WIRE REINFORCED GRAPHITED ASBESTOS	---
13	BONNET GASKET	COMPRESSED ASBESTOS FIBRE / SOFT STEEL	1
14	BONNET STUDS	ASTM A193 Gr.B7	---
15	BONNET NUTS	ASTM A194 Gr.2H	---
16	GLAND EYEBOLTS & NUTS	ASTM A193 Gr.B7 / ASTM A194 Gr.2H	2
17	GLAND LUG BOLTS & NUTS	ASTM A193 Gr.B7 / ASTM A194 Gr.2H	2
18	HANDWHEEL	CAST IRON	1
19	WHEEL NUT & WASHER	CARBON STEEL	2

SIZE		CLASS 300							
in.	mm	A	B	ØC	ØD	ØM	N	PCD	ØJ
1"	25	203	17.5	51	124	19	4	89	135
1½"	40	229	20.5	73	155.4	22	4	114.3	200
2"	50	267	22	92	165	19	8	127	200
2½"	65	292	25	105	190.5	22	8	149.3	200
3"	80	317.5	28.5	127	209.5	22	8	168	300
4"	100	356	32	157	254	22	8	200	350
5"	125	400	35	186	279.4	22	8	235	350
6"	150	444.5	36.5	216	317.5	22	12	269.7	400
8"	200	559	41	270	381	25	12	330.2	550
10"	250	622	47.5	324	444.5	28	16	387.4	600
12"	300	711	51	381	521	32	16	450.8	600

ALL DIMENSIONS ARE IN MM UNLESS OTHERWISE SPECIFIED

REGISTERED FACTORY AND OFFICE
ROYALTECH VALVES
 #B-492/B, 2ND GATE INDUSTRIAL ESTATE
 GOKUL ROAD, HUBLI-580030
 KARNATAKA, INDIA

FOR ENQUIRY, CONTACT US AT

+91 90198 20791 | 97383 48007

sales.royaltechvalves@gmail.com

FOR FURTHER DETAILS, VISIT OUR WEBSITE

www.royaltechvalves.com