

THERMODYNAMIC STEAM TRAP (TD-3)

SIZES: DN15 | DN20 | DN25



FEATURES

- Superior Quality Investment Casting body.
- Provided with integral strainer.
- Stainless Steel (SS304) perforated sheet screen for trouble-free service.
- Mirror finished and differentially hardened moving disc and seat for a long life and a tight seal.
- Screwed Female Ends available in BSP/BSPT/NPT.

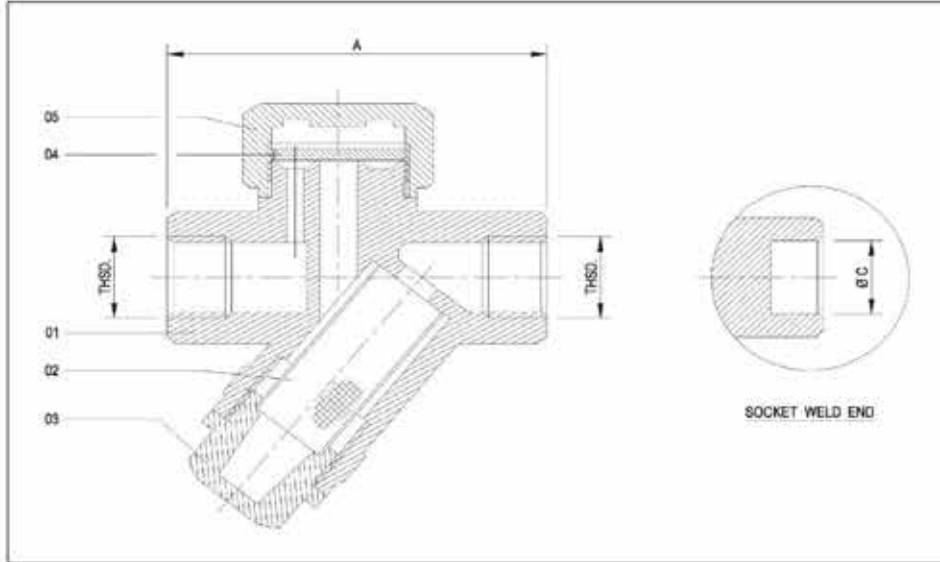
ISO 9001:2015

BUREAU VERITAS
Certification



TECHNICAL DATA:

SCREWED END : ASME B1.20.1
 SOCKET WELD END : ASME B16.11



SL NO	DESCRIPTION	MATERIAL	QTY
1	BODY	BRONZE / SS / CF8 / CF8M / CA 40	1
2	SCREEN	SS304 (20 / 40 MESH)	1
3	PLUG	SS / CF8 / CF8M / CA 40	1
4	DISC	SS / CF8 / CF8M / CA 40	1
5	BODY COVER	SS / CF8 / CF8M / CA 40	1

SIZE		A	THDS.		ØC
in.	mm				
1/2"	15	76	1/2"	BSP-BSPT-NPT	22
3/4"	20	76	3/4"	BSP-BSPT-NPT	27.5
1"	25	90	1"	BSP-BSPT-NPT	34

ALL DIMENSIONS ARE IN MM UNLESS OTHERWISE SPECIFIED

REGISTERED FACTORY AND OFFICE
ROYALTECH VALVES
 #B-492/B, 2ND GATE INDUSTRIAL ESTATE
 GOKUL ROAD, HUBLI-580030
 KARNATAKA, INDIA

FOR ENQUIRY, CONTACT US AT

+91 90198 20791 | 97383 48007

sales.royaltechvalves@gmail.com

FOR FURTHER DETAILS, VISIT OUR WEBSITE

www.royaltechvalves.com